

IOWA

Office of Teaching, Learning & Technology

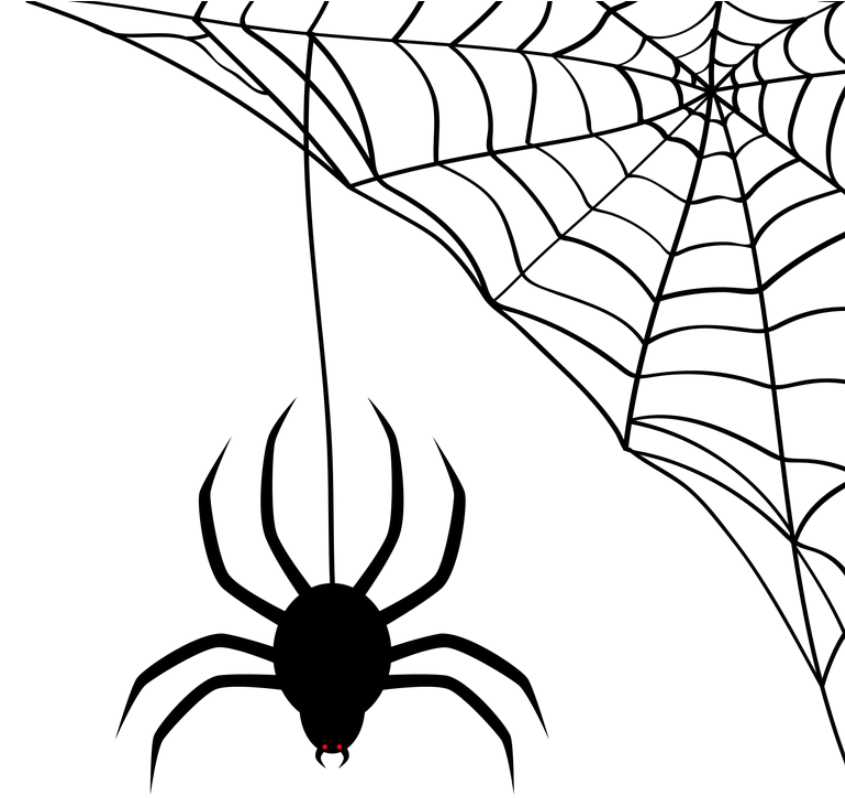
ICON Tricks & Treats

The SITA Program

Fall 2021

Tips For This Training

- This training is being recorded.
- Adjust the auto-captions to suit your needs.
- Please mute yourself when not talking.
- Use the chat any time.
- Need more help? Contact the ITS Help Desk.
 - Email: its-helpdesk@uiowa.edu
 - Phone: (319)384-HELP(4357)



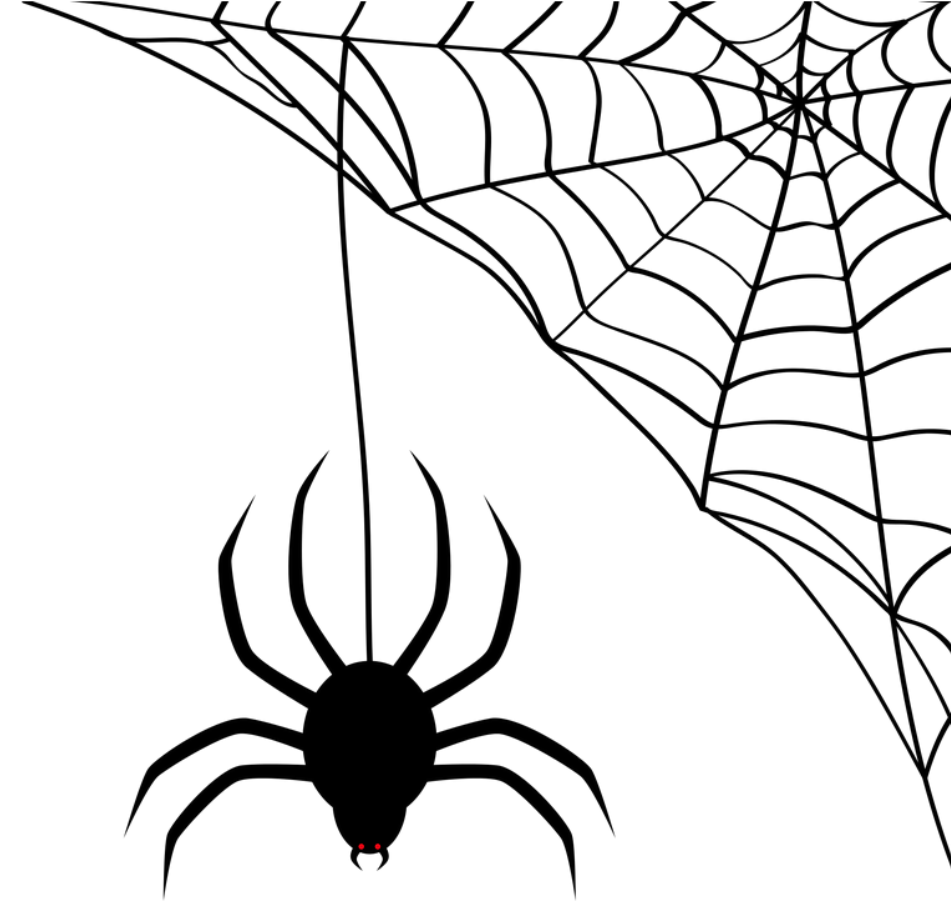
Spooky Ice Breaker!

In the chat, please answer the following question:

If you could dress up as anything or anyone for Halloween, what/who would you dress up as?

Training Agenda

- Grading
- Accessibility
- Communication/Interaction
- Miscellaneous



Question:

You want to give 3 extra credit assignment opportunities to your students in BOO:1200.

What is the best way to do this?



Grading

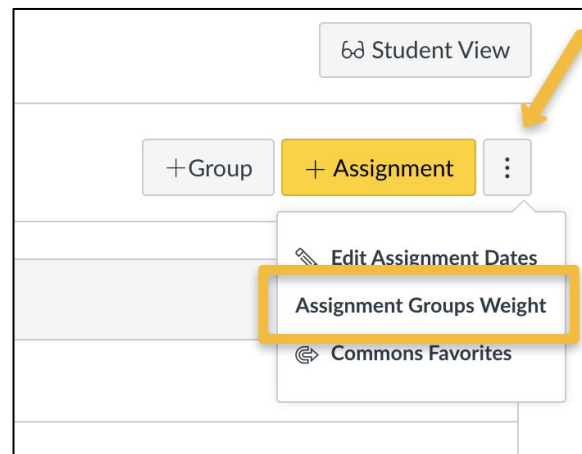
Extra Credit Options

Extra Credit Options

- Weighted assignment groups
 - Clear to students
 - Allows ease in setting up multiple extra credit opportunities
- Quiz 'fudge points'
 - Effective for one-time extra credit opportunities

Weighted assignment groups

- Weights of assignment groups can be changed
- Adding group called "Extra Credit" to weight beyond 100% allows students to earn extra credit
 - Will never lower students' grades



A screenshot of a dialog box titled "Assignment Groups Weight" with a close button (X) in the top right corner. The dialog contains a checked checkbox labeled "Weight final grade based on assignment groups". Below this is a table of assignment groups with their respective weights and percentage symbols. The "Extra Credit" row is highlighted with a yellow box. At the bottom of the dialog are "Cancel" and "Save" buttons.

Assignment Group	Weight	Percentage
Exams	20	%
Homework	25	%
Quizzes	25	%
Group Project	10	%
Extra Credit	5	%
Total		105%

Quiz 'fudge points'

- Fudge points add points to existing quiz scores
 - **Does not change the total points possible**
- Fudge points are added through SpeedGrader
 - Navigate to a given quiz in ICON
 - Click SpeedGrader in top right corner
 - Add fudge points at the bottom for displayed student

Fudge Points:

You can manually adjust the score by adding positive or negative points to this box.

Final Score: 5 out of 6



Fudge Points:

You can manually adjust the score by adding positive or negative points to this box.

Final Score: 6 out of 6

Question:

You want to ensure that your content is accessible for all students in SKEL:2200. How can you check this?



Accessibility

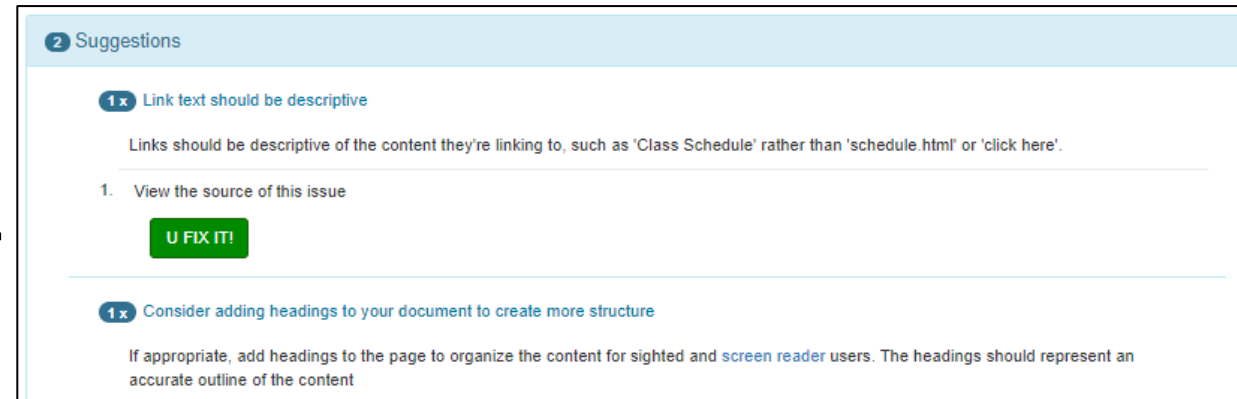
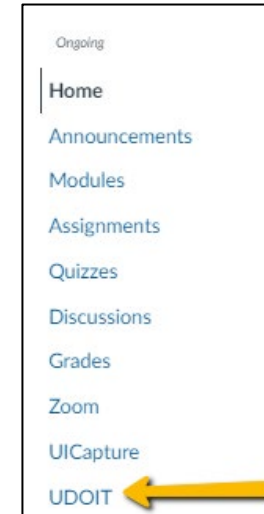
UDOIT & Quiz Moderation

UDOIT

- Accessibility check tool integrated with ICON
 - No installation or outside preparation required
- Checks for common accessibility issues
 - Alt text, table headers, color contrast, text structure
- Tool can help you fix many errors/suggestions on results page

Run a UDOIT report

- Click **UDOIT** tab in course navigation
 - Enable through Navigation tab in Settings if not visible on left menu
- Check content you would like to scan
- Click "Scan"
- Use results to modify content
 - Manually go to content or use **UFIXIT**

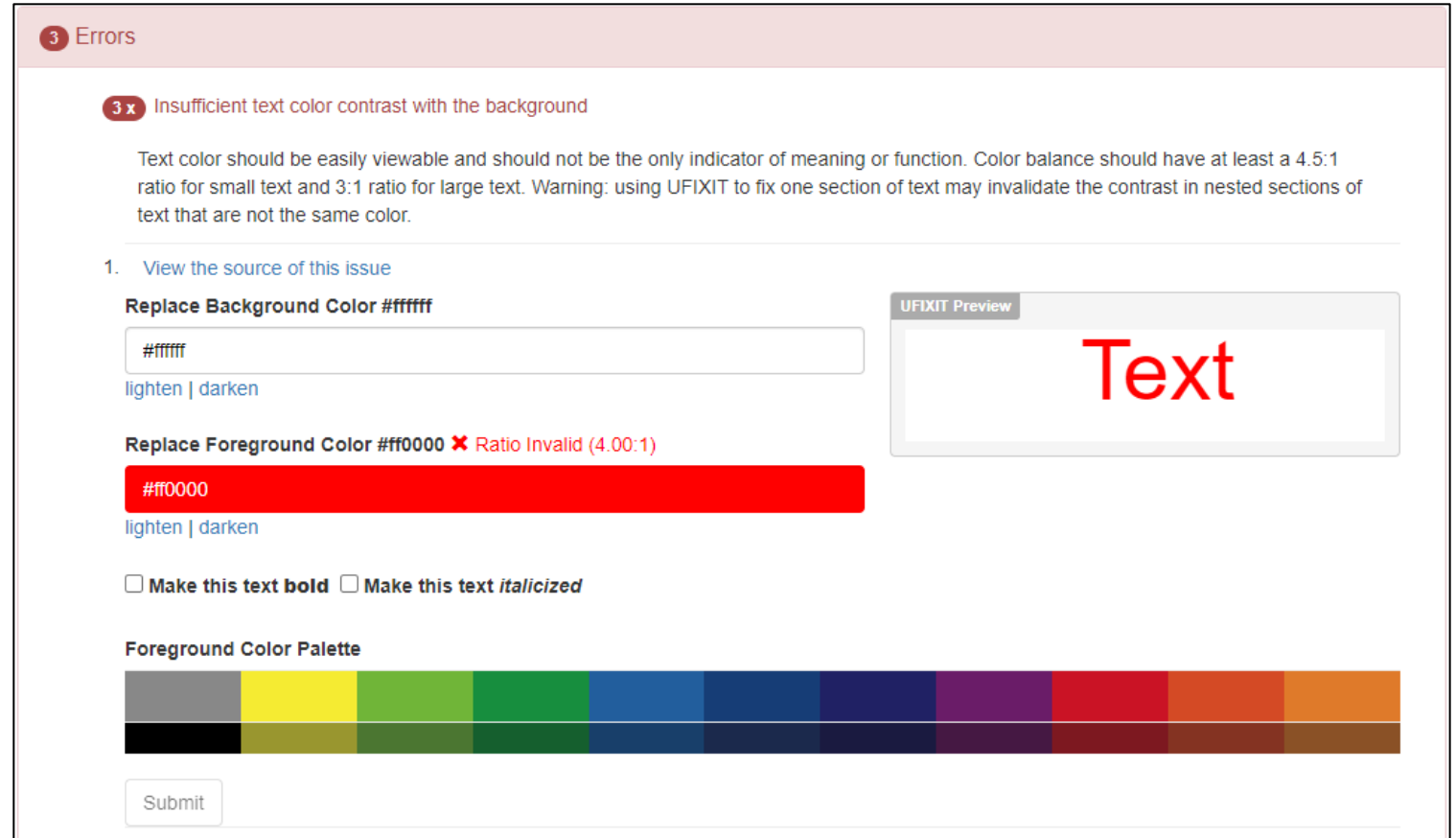


UDOIT Checks

Content Type	If checked
Heading Structure	YES
Alt Text	YES
Accessible Tables	YES
Color Contrast	YES
Descriptive Links	YES
Video Captions (YouTube)	YES
Untagged PDF	NO
Scanned Documents	NO
Document Language	NO
Missing Titles	NO
External Content	NO
Video / Image Watermarks	NO

UFIXIT with UDOIT

→ The UFIXIT tool makes it easy to fix accessibility errors without leaving the UDOIT interface in Canvas. *

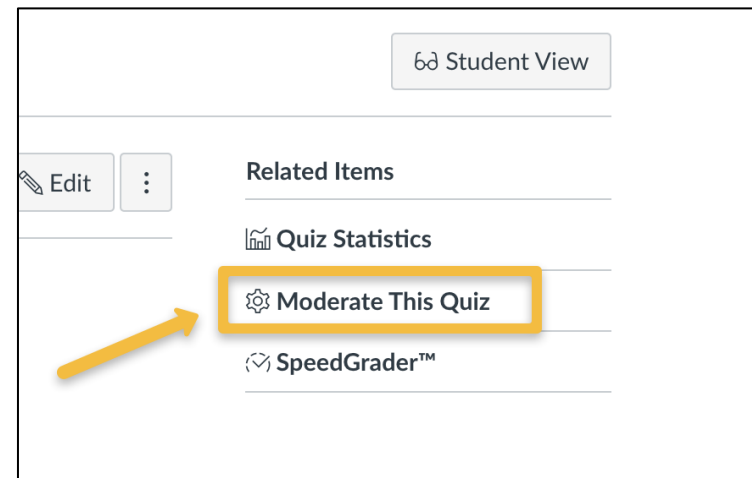


The screenshot displays the UDOIT UFIXIT interface. At the top, a pink header indicates '3 Errors'. The first error is 'Insufficient text color contrast with the background', which has occurred 3 times. Below the error message, there is a list of actions: '1. View the source of this issue'. The interface provides two color selection options: 'Replace Background Color #ffffff' with a white input field and 'lighten | darken' links, and 'Replace Foreground Color #ff0000' with a red input field, a 'Ratio Invalid (4.00:1)' warning, and 'lighten | darken' links. There are also checkboxes for 'Make this text bold' and 'Make this text italicized'. A 'Foreground Color Palette' is shown at the bottom with two rows of color swatches. A 'Submit' button is located at the bottom left. A 'UFIXIT Preview' window on the right shows the word 'Text' in red on a white background.

* There are accessibility issues that require working on content outside ICON

Moderating Quizzes

- Students frequently need a quiz re-opened or allowed extra time
 - Accommodations
 - Internet outages/computer issues
- ICON Quizzes have a "Moderate this Quiz" feature
 - Go to quiz page
 - Click "Moderate this Quiz" in corner



Moderating Quizzes

- Resulting page will show if/when students took the quiz
- Click the pencil symbol at the end of a student's name to edit their number of attempts or time limit for each attempt

Moderate Quiz

Search People Filter

<input type="checkbox"/> Student	Attempt	Time	Attempts Left	Score	
<input type="checkbox"/> Catlett, Elizabeth	--		1		
<input type="checkbox"/> Jessup, Walter	--		1		
<input type="checkbox"/> Macbride, Thomas	--		1		

Note: A yellow arrow points to the pencil icon for Elizabeth Catlett, and a yellow box highlights the pencil icons for all three students.

Question:

**You want students to interact
with all your spooky
ICON content.**



What can you do to help this?

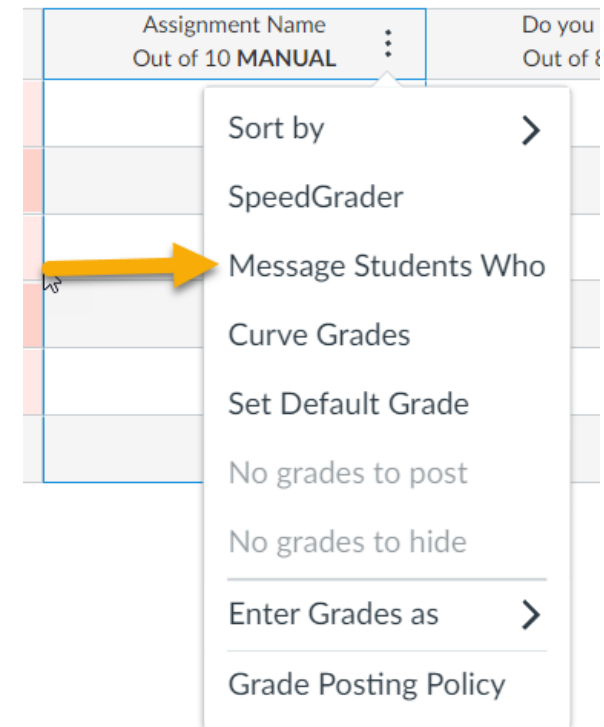
Communication/Interaction

"Message students who" tool

→ Use to send messages to certain subgroups of an assignment

→ Can choose students who:

- Haven't submitted yet
- Haven't been graded yet
- Scored less than a particular grade
- Scored more than a particular grade



Showing Announcements on the Homepage




- Go to Settings tab
- Under 'Course Details' scroll to the bottom and click "more options"
- Check 'Show recent announcements on course homepage' and select how many announcements to show
- Update Course Details to save

fewer options

Show recent announcements on Course home page

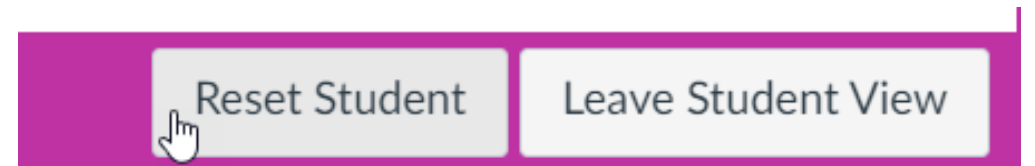
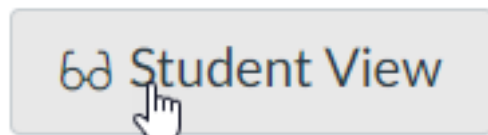
3 Number of announcements shown on the homepage

Recent Announcements

-  **Reading Uploaded**
Hi all, I'm sorry about the confusion regarding the reading for this w...
Posted on: Oct 7, 2021 at 9:46am
-  **Extra Credit Opportunity!**
Please see details below for an extra credit opportunity! Email me if ...
Posted on: Oct 7, 2021 at 9:45am
-  **Test Date has Changed**
Due to circumstances, our upcoming test has been pushed back to ...
Posted on: Oct 7, 2021 at 9:45am

Utilizing Student View

- Use Student View to check that your ICON site is set up correctly
- On most pages, you will see the student view option in the top right corner
- Once clicked, you can navigate your page as the Test Student
- You can Leave Student View or Reset Student View



Need Help?

- [Request a consultation](#), with follow-up support as needed, to discuss course structure, communication strategies, course facilitation, and more.
- Ask a SITA for Technical Consultation
 - SITA@uiowa.edu
- [Contact the ITS Help Desk](#) for technical troubleshooting or technology issues/questions.

Further Resources

- Office of Teaching Learning and Technology
 - <https://teach.its.uiowa.edu/>
- ITS Help Desk
 - Email: its-helpdesk@uiowa.edu
 - Phone: (319)384-HELP(4357)

IOWA